

PCI card and PCI device install

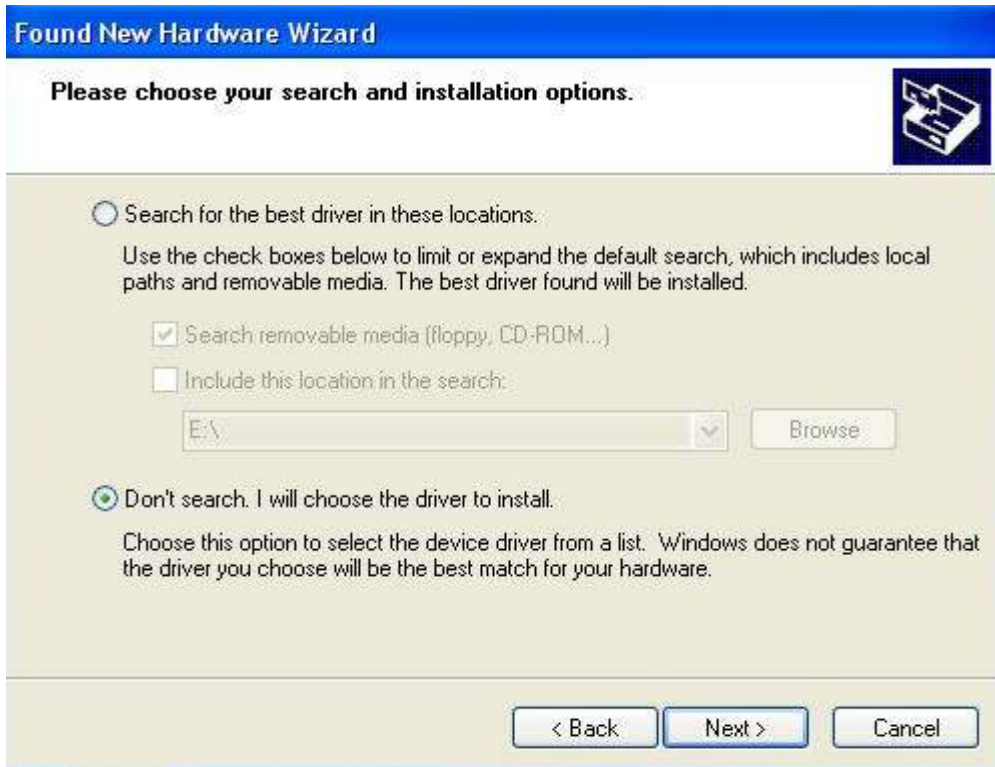
Turn off your computer power first, and open cover of your computer box, then insert PCI card into PCI port of computer. If you don't know well this operation, please ask a professional hardware or after service personnel to do. So as to prevent hardware damaged.

You connect PCI control card to the printer with print cable that is sent along with the printer, when installation of PCI card finished. And then turn on computer, to install PCI device referring to the following steps:

The graphical user interface of PCI device is similar to Win2000's. You will see Hardware Wizard first, then put CD sent along with the printer into CD-ROM and choose "Install from a list or specific location (Advanced)".



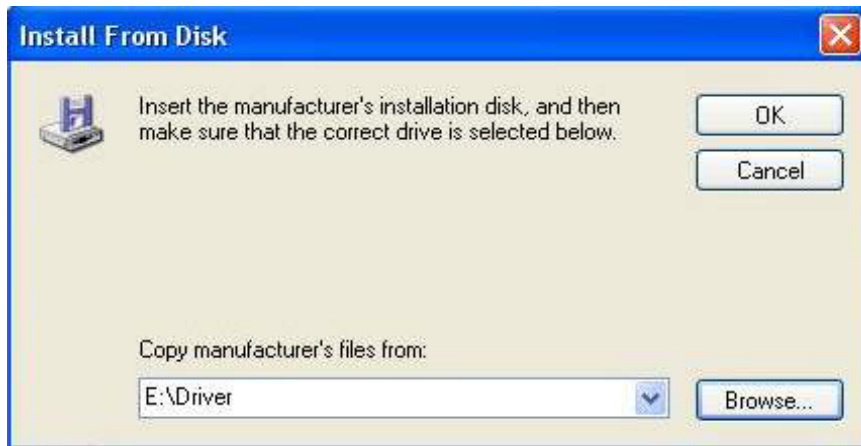
Click the "NEXT".



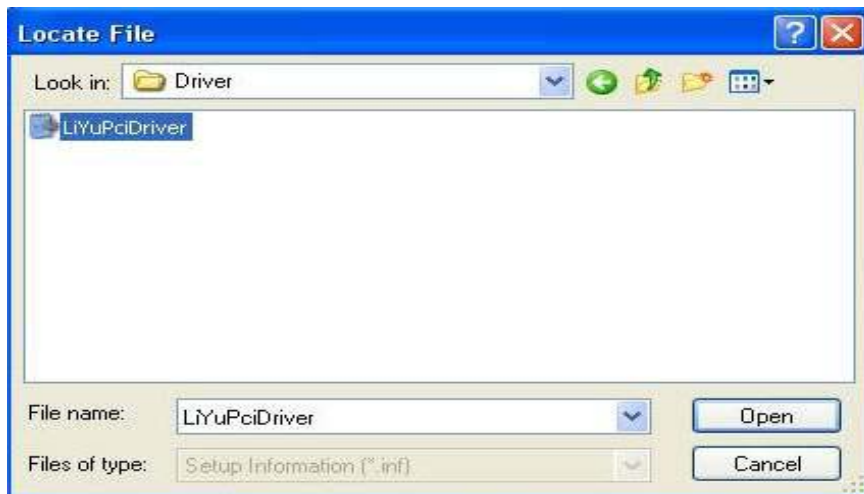
Choose "Don't search. I will choose the driver to install", then "NEXT".



Click "Have Disk", to show "Install From Disk" interface.



Click “Browse” to choose LiYuPciDriver.inf document under Driver directory in CD.



- If your CD-ROM is E disk, please to choose LiYuPciDriver.inf document under E: \Driver.

Then click “OK” in “Install From Disk” interface. Next interface will show PCI Card installation type that you need.



Choose "LYRIC JetPlot Cad" item in Model bar, to click "NEXT". At the same time Windows XP will install driver. Restart the computer after installation finished. So installation of PCI control card driver is over.